



CGI - Typical house type

Egstow Park, Clay Cross

3 bedroom home
available to buy through
shared ownership



“
A home of your
own at a price you
can afford



 ncha

Specifications

Kitchen

- Fitted contemporary kitchen
- Integrated oven and hob
- Stainless steel extractor hood
- Contemporary mixer taps over 1½ bowl sink
- Vinyl flooring

Bathroom

- White bath suite
- Shower over bath
- Glass shower screen
- Tiled to full ceiling around bath
- Vinyl flooring

Heating

- Double glazed windows
- Gas fired central heating
- Thermostatic radiator valves

External

- Enclosed rear garden
- Off-street allocated parking

Decoration

- White emulsion walls and ceilings
- White gloss painted woodwork

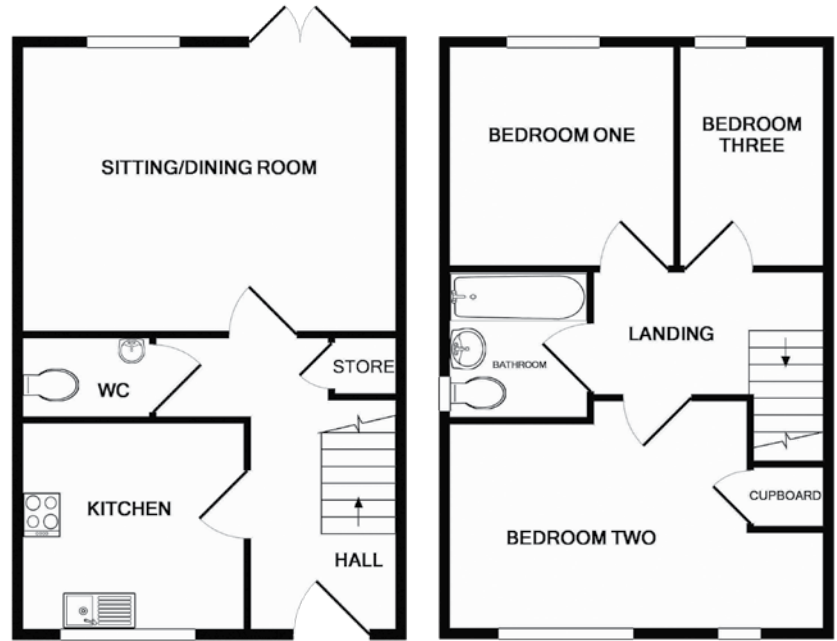
Energy assessment

- Predicted energy assessment – B

Key dimensions

Room	Dimensions
Living room	5.150m x 3.971m
Kitchen	3.095m x 2.878m
Bedroom 1	3.124m x 3.056m
Bedroom 2	5.150m x 3.134m
Bedroom 3	1.963m x 3.056m

Any measurements quoted are approximate and must be checked on site and against the layout which may vary due to unforeseen circumstances. Floor plans may be mirror handed. These details have been produced for illustrative purposes only and does not form any part of a contract or constitute an offer. Actual specification may vary from that shown in floor plan.



Ground floor

First floor

How to find us

The development is located on St Mary's Rise, St Lawrence Fold in Clay Cross, Chesterfield. If using a SatNav, the postcode is S45 9NF.

Buying more shares

This property falls under the rules of a standard lease. This means you'll be able to buy further shares up to 100% and acquire the freehold to own the property outright.